

# ROOFING IN TPO FOR PEDESTRIAN TRAFFIC BALLASTED WITH LOOSE LAY PAVING SYSTEM

Cold roof: with sealing element applied without thermal insulation  
TOTALLY INDEPENDENT SYSTEM • REINFORCED CONCRETE SUBSTRATE



## ■ SUPPORTING ELEMENT or SUBSTRATE

The surface must:

1. Be smooth and free from debris and irregularities that may cause damage to the layers above
2. Be stable over time
3. Be chemically compatible with the roofing system components
4. Have an adequate slope. A flat or sub-horizontal roof must have a slope ranging from 1.5 and 5 %.

## ■ ADJUSTMENT LAYER-COMPENSATION

FLAG geotextile PP, felt, non-woven, polypropylene whose weight ranges from minimum 500 g/m<sup>2</sup> depending upon the condition of the support.

## ■ SEALING ELEMENT

FLAGON EP/PV synthetic liner manufactured in TPO/FPO modified polyolefin, dimensionally stabilised with a layer of glass fibre (50g/m<sup>2</sup>), resistant to weathering, ultraviolet rays and to root growth. It has a signal layer and it is hot air welded on the sheet overlaps.

The perimeter fixing at the base of the upstand must be performed with **Flag pre-drilled bar** in galvanized sheet iron.

Insert **Flag anti-puncturing joint** at the junction between two adjacent bars and hot-weld the tear prevention curb **FLAGOFIL TPO**.

**Anti-root membrane, FLL certified.**

## ■ PROTECTION LAYER

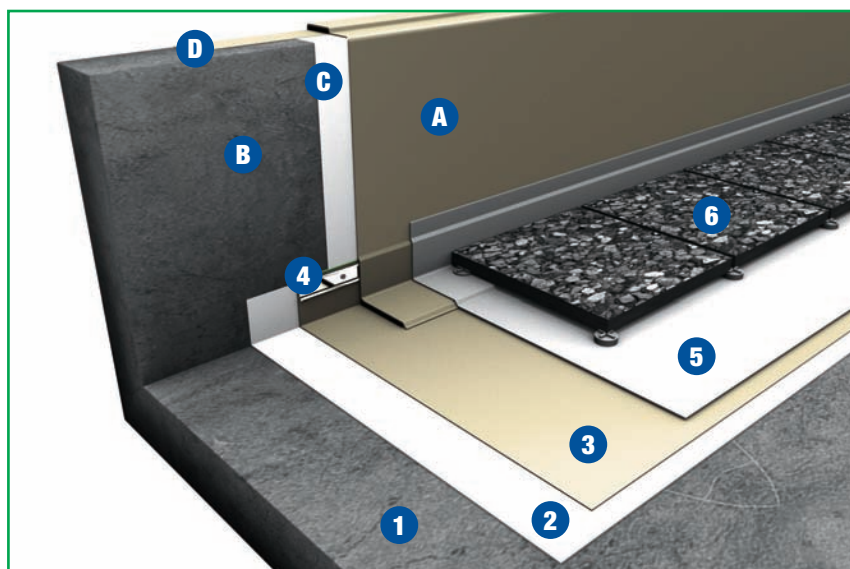
FLAGON TS anti-puncturing liner made of a coated PVC film, 0.40 mm thick coupled to 120 g/m<sup>2</sup> non-woven felt in polyethelene. The unrolled sheets must be welded on the outside edges to provide a complete homogeneous protection layer.

## ■ BALLASTING AND PROTECTION LAYER

It is effected using pre-cast concrete square paving slabs dry-laid on a bed of sand.

## FLAGON EP/PV

	STANDARD SYSTEM	OPTIMUM SYSTEM	REINFORCED SYSTEM
Finishing	RAISED FLOOR	RAISED FLOOR	RAISED FLOOR
Protection layer	FLAGON TS	FLAGON TS	FLAGON TS
Sealing element	EP/PV - 1.5 mm	EP/PV - 2.0 mm	EP/PV - 2.4 mm
Adjustment layer	Non-woven felt PP ≥ 500 g/m <sup>2</sup>	Non-woven felt PP ≥ 500 g/m <sup>2</sup>	Non-woven felt PP ≥ 500 g/m <sup>2</sup>
Slopes	1.5 % ≤ P ≤ 5 %	1.5 % ≤ P ≤ 5 %	1.5 % ≤ P ≤ 5 %



### Horizontal surface

1. Supporting element
2. Adjustment layer
3. FLAGON EP/PV
4. Perimeter fixing by pre-drilled bar
5. Protection Layer FLAGON TS
6. pre-cast concrete square paving slabs

### Vertical surface

- A. FLAGON EP/PV
- B. h<50 cm FLEXOCOL TPO vertical gluing layer  
h>50 cm mechanical fixing
- C. Separating layer in non-woven felt (non-adhered roof system)
- D. Possible finishing elements:
  - Flagmetal termination strip and flashing
  - Flagmetal strip under cap
  - Flagmetal perimeter profile