

ROOFING IN PVC-P FOR PEDESTRIAN TRAFFIC BALLASTED WITH TRADITIONAL PAVING

Cold roof: with sealing element placed on top of the supporting element without thermal insulation
TOTALLY INDEPENDENT SYSTEM • REINFORCED CONCRETE SUBSTRATE

3b1



■ SUPPORTING ELEMENT or SUBSTRATE

The surface must:

1. Be smooth and free from debris and irregularities that may cause damage to the layers above
2. Be stable over time
3. Be chemically compatible with the roof system components
4. Have an adequate slope. A flat or sub-horizontal roof must have a slope ranging from 1.5 and 5 %.

■ ADJUSTMENT LAYER-COMPENSATION

FLAG geotextile PP, felt, non-woven, polypropylene whose weight ranges from minimum 500 g/m² depending upon the condition of the support.

■ SEALING ELEMENT

FLAGON SV, synthetic membrane in PVC-P with a layer of glass fibre (50 g/m²) inserted for dimensional stability, resistant to weathering, ultraviolet rays and to root growth. It has a signal layer and it is hot air welded on the sheet overlaps.

The perimeter fixing at the base of the upstand must be performed with **Flag pre-drilled bar** in galvanized sheet iron.

Insert **Flag anti-puncturing joint** at the junction between two adjacent bars and hot-weld the tear prevention curb **FLAGOFIL PVC**.

Anti-root membrane, FLL certified.

■ PROTECTION LAYER

FLAG geotextile PP, felt, non-woven, polyester whose weight ranges from minimum 500 g/m² depending upon the condition of the support.

■ BARRIER LAYER

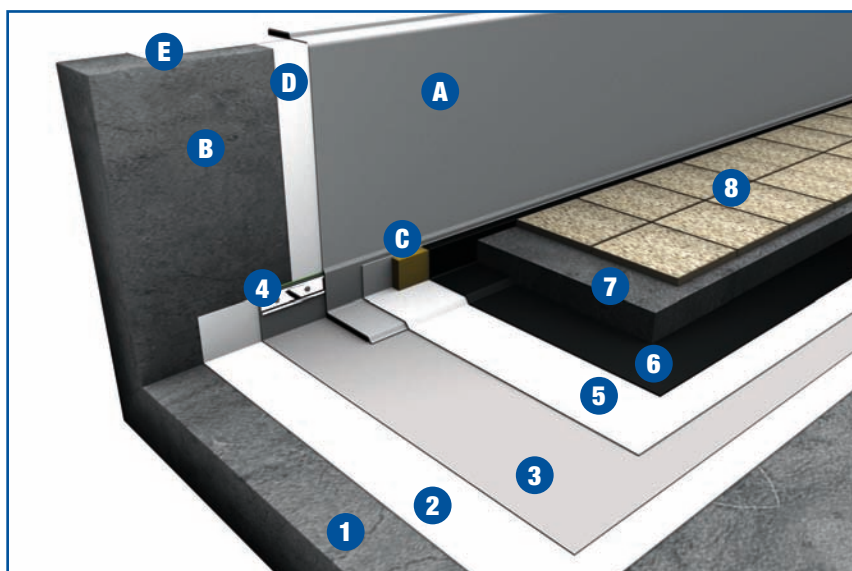
Dry laid **LDPE film** with adequate thickness.

■ BALLASTING AND PROTECTION LAYER

It is made up of a reinforced concrete screed with minimum 5 cm thickness and foot path covered with tiles (or equivalent material).

The waterproof membrane must be fixed at all upstands before laying the slabs.

	FLAGON SV		
	STANDARD SYSTEM	OPTIMUM SYSTEM	REINFORCED SYSTEM
Finishing	Concrete cap sheet + tiles	Concrete cap sheet + tiles	Concrete cap sheet + tiles
Barrier layer	VAPOR FLAG 0.2	VAPOR FLAG 0.4	FLAG LDPE 0.8 mm
Protection layer	Non-woven felt PP ≥ 500 g/m ²	Non-woven felt PP ≥ 500 g/m ²	Non-woven felt PP ≥ 500 g/m ²
Sealing element	SV - 1.5 mm	SV - 2.0 mm	SV - 2.4 mm
Adjustment layer	Non-woven felt PP ≥ 500 g/m ²	Non-woven felt PP ≥ 500 g/m ²	Non-woven felt PP ≥ 500 g/m ²
Slopes	1.5 % ≤ P ≤ 5 %	1.5 % ≤ P ≤ 5 %	1.5 % ≤ P ≤ 5 %



Horizontal surface

1. Supporting element
2. Adjustment layer
3. **FLAGON SV**
4. Perimeter fixing by pre-drilled bar
5. Protection layer
6. Barrier layer LDPE
7. Concrete cap sheet
8. Tiles (equivalent material)

Vertical surface

- A. **FLAGON SV**
- B. h<50 cm FLEXOCOL V vertical gluing layer
h>50 cm mechanical fixing
- C. Compressible element
- D. Separating layer in non-woven felt (non-adhered roof system)
- E. Possible finishing elements:
 - Flagmetal termination strip and flashing
 - Flagmetal strip under cap
 - Flagmetal perimeter profile

Flag S.p.A. - SOPREMA GROUP

v. Industriale dell'Isola 3 24040 Chignolo d'Isola (BG) T.+39.035.0951011 F.+39.035.4940649 e-mail:info@flag.it website:www.flag.it

For technical information: tech-office@flag.it

